



# The Importance of Public Reports in Protecting Tree Health

# Plant Health Forestry – What We Do



Bronte

**Prevent Entry**



Wylder

**Minimise Impact**



Brontë Thomas, Forestry Commission

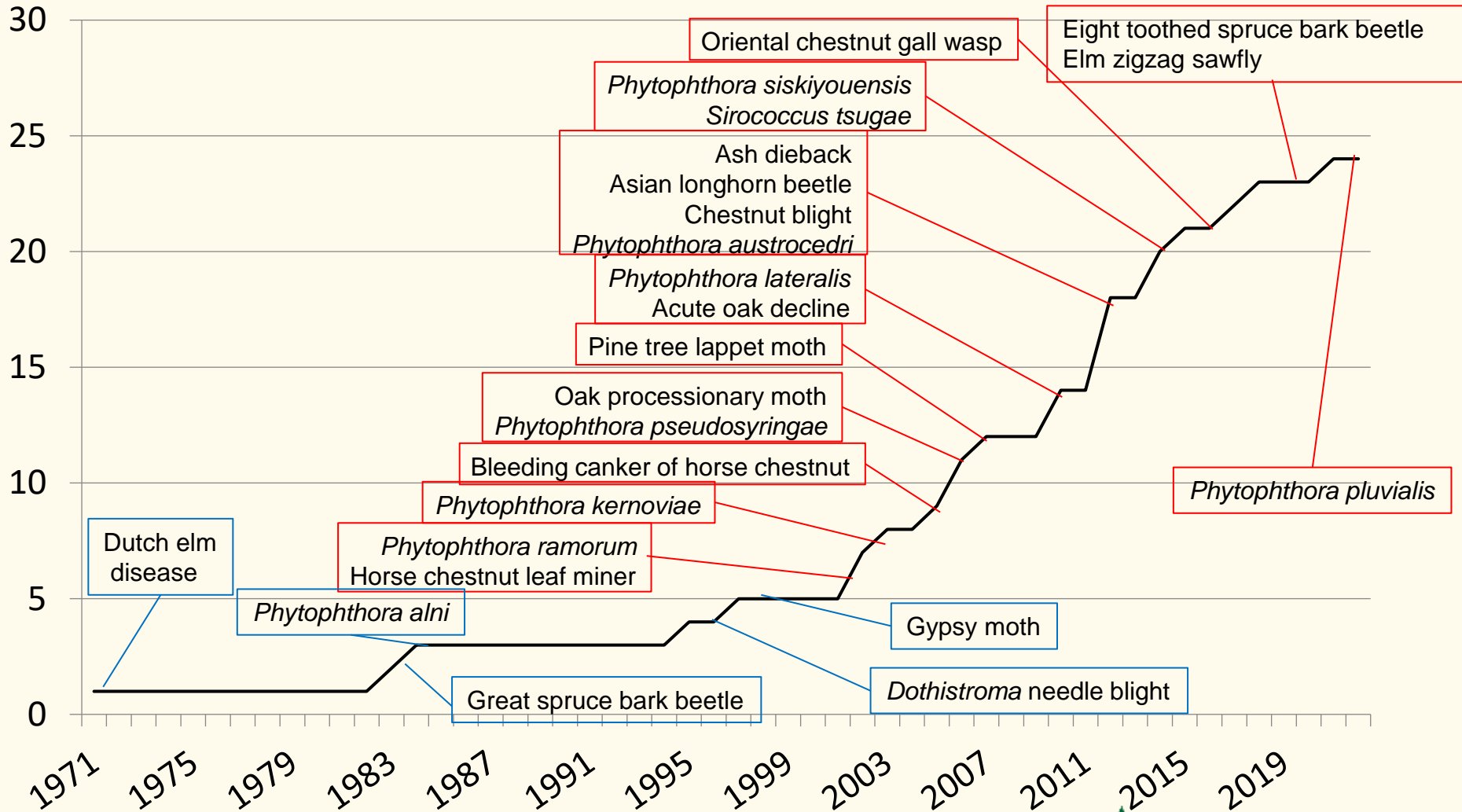


Barnaby Wylder, Forestry Commission



Bronte Thomas, Forestry Commission

# Pest & Disease Introductions



# What We're Up Against



Brontë Thomas, Forestry Commission



Brontë Thomas, Forestry Commission



Brnaby Walker, Forestry Commission



Forest Research



Mick Biddle, Forest Research

# The Importance of Public Enquiries

**Prevent Entry**



**Detect Early**



**Minimise Impact**



# Tree Alert

Tree Pest & Disease sighting reporter



## Tree Alert

Britain's trees are under unprecedented threat from new pests and diseases. We are particularly interested in identifying problems with ash, oak, horse chestnut, pine and sitka spruce trees. You can help by being aware of the symptoms of serious threats and reporting them for further investigation.

Typical symptoms

Report a Sighting

More info (website)

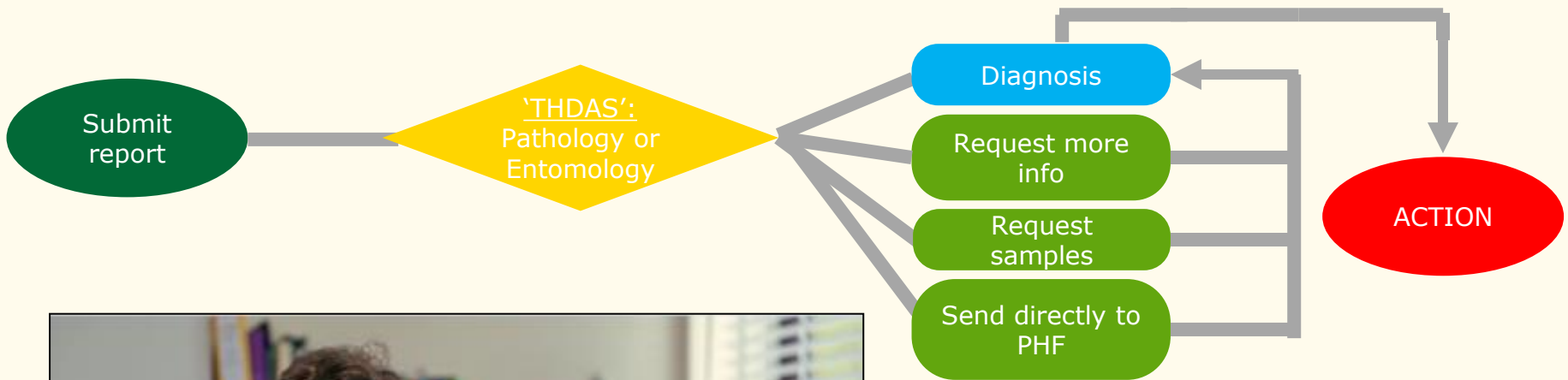
<http://treealert.forestryresearch.gov.uk>

Info required:

- **About you**
- **About your observation** (incl. grid reference and at least 3 good quality photos)



# The Tree Alert Reporting Process



Forest Research



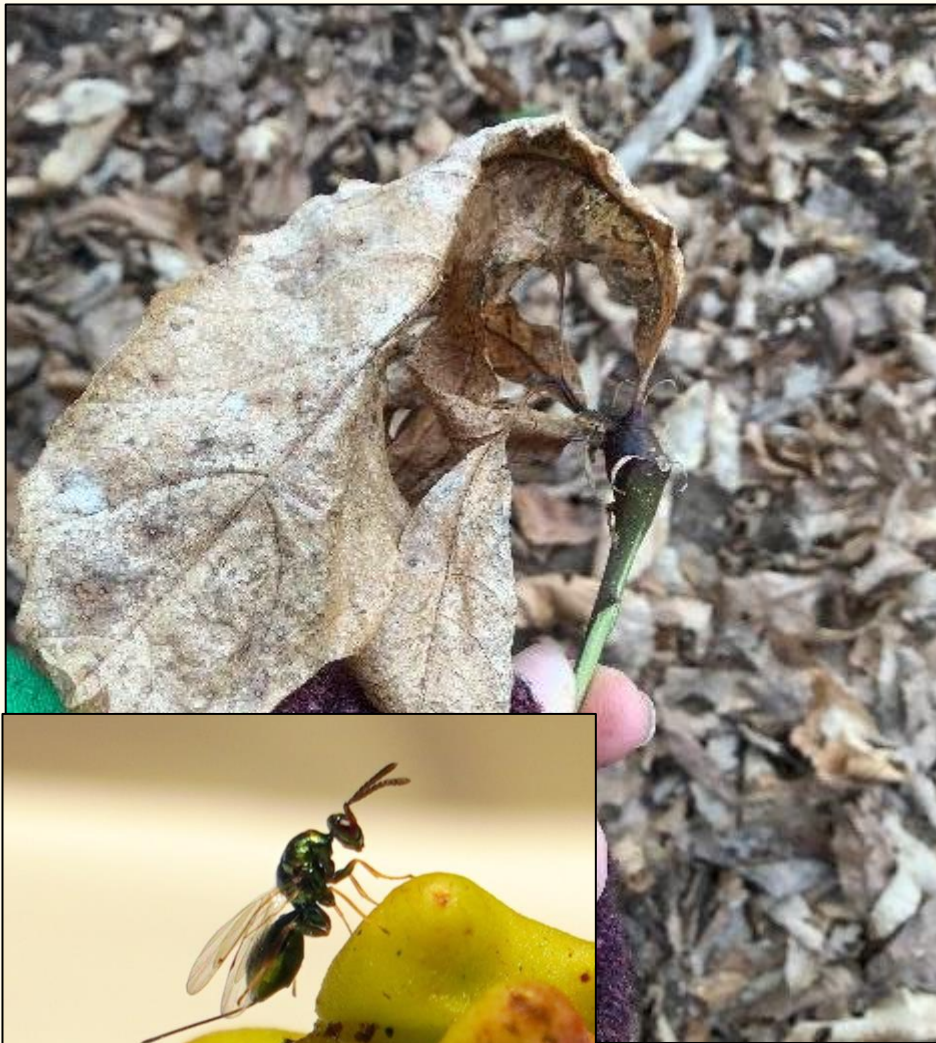
Forest Research

# Protect the Health of Your Trees

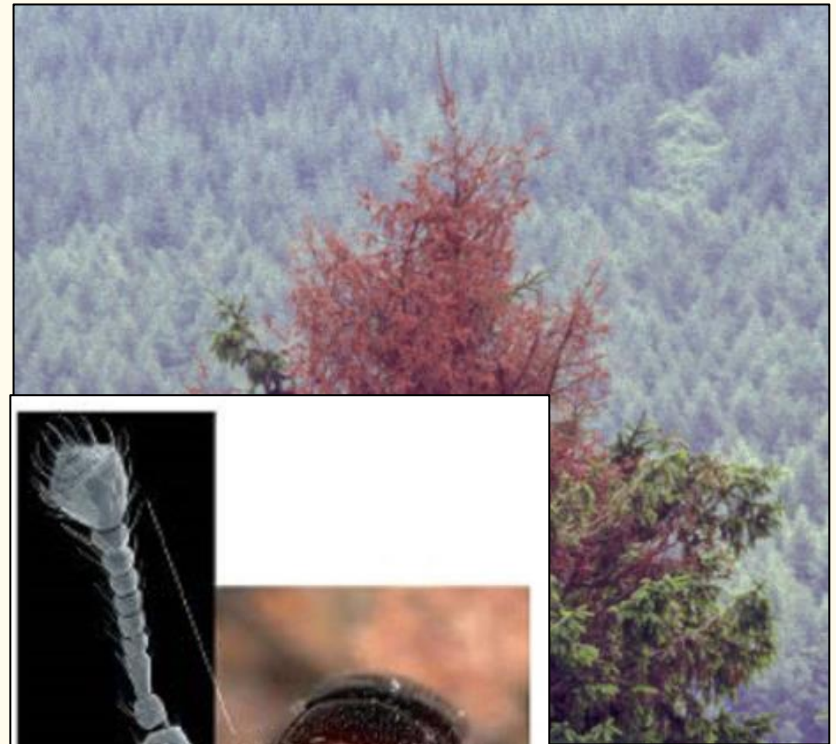




# Protect the Health of Your Trees

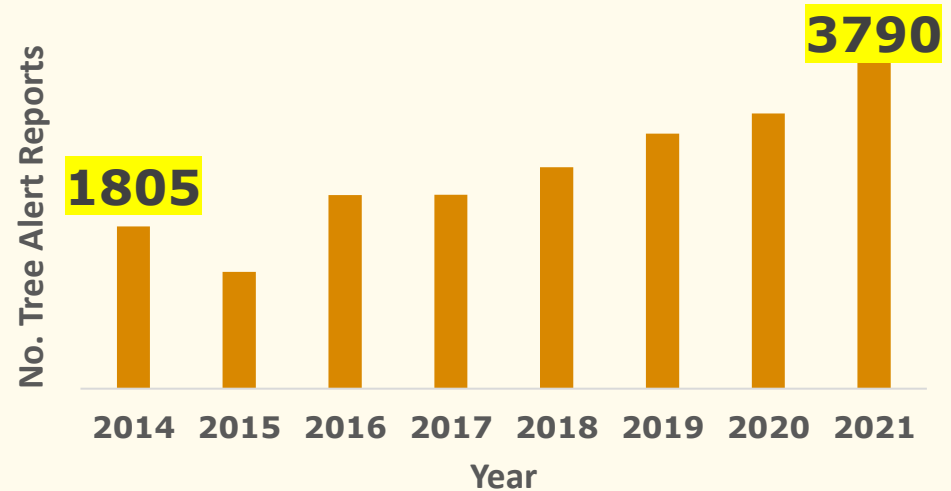
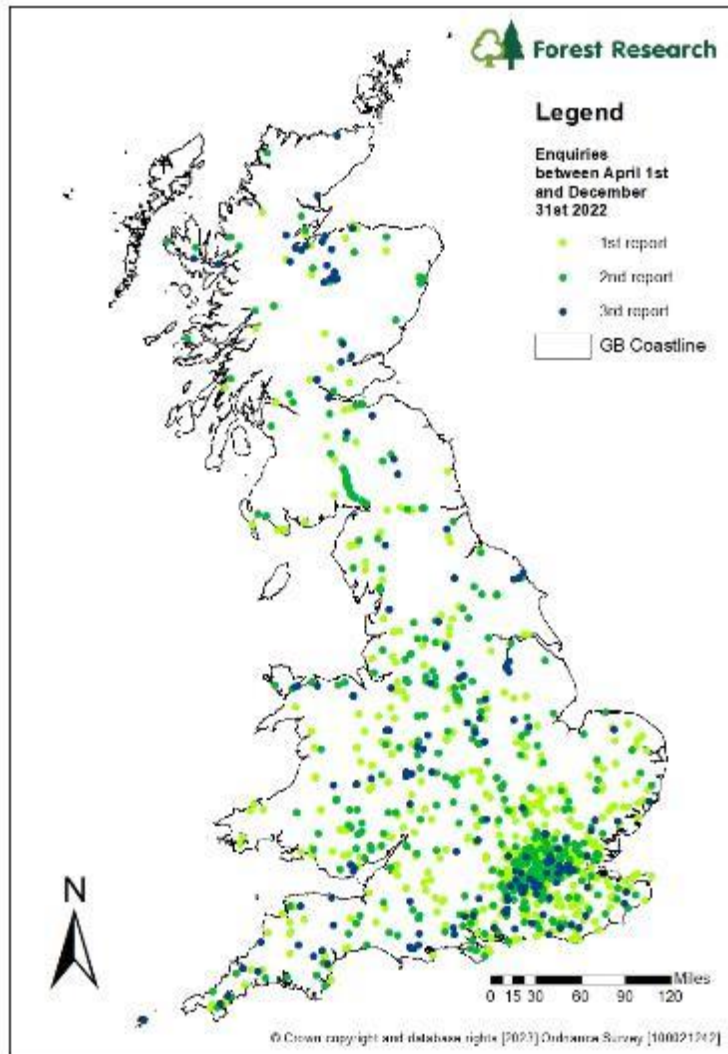


Forest Research



Forest Research

# Protect Tree Health Across Great Britain



**TreeAlert**  
Tree Pest & Disease sighting reporter



Forest Research

# Submit your Tree Alerts!

Tree Alert Reporting Tool:

[Tree Alert \(forestresearch.gov.uk\)](http://forestresearch.gov.uk)

Pest and Disease Guides:

[Priority pests and diseases – Observatree](#)

[Pest and disease resources - Forest Research](#)

Biosecurity Resources:

[How biosecurity can prevent the introduction and spread of tree pests and diseases - GOV.UK \(www.gov.uk\)](#), including a link to the Forestry Commission's e-Learning Portal, <http://www.forestrylearning.org.uk/login/index.php>