

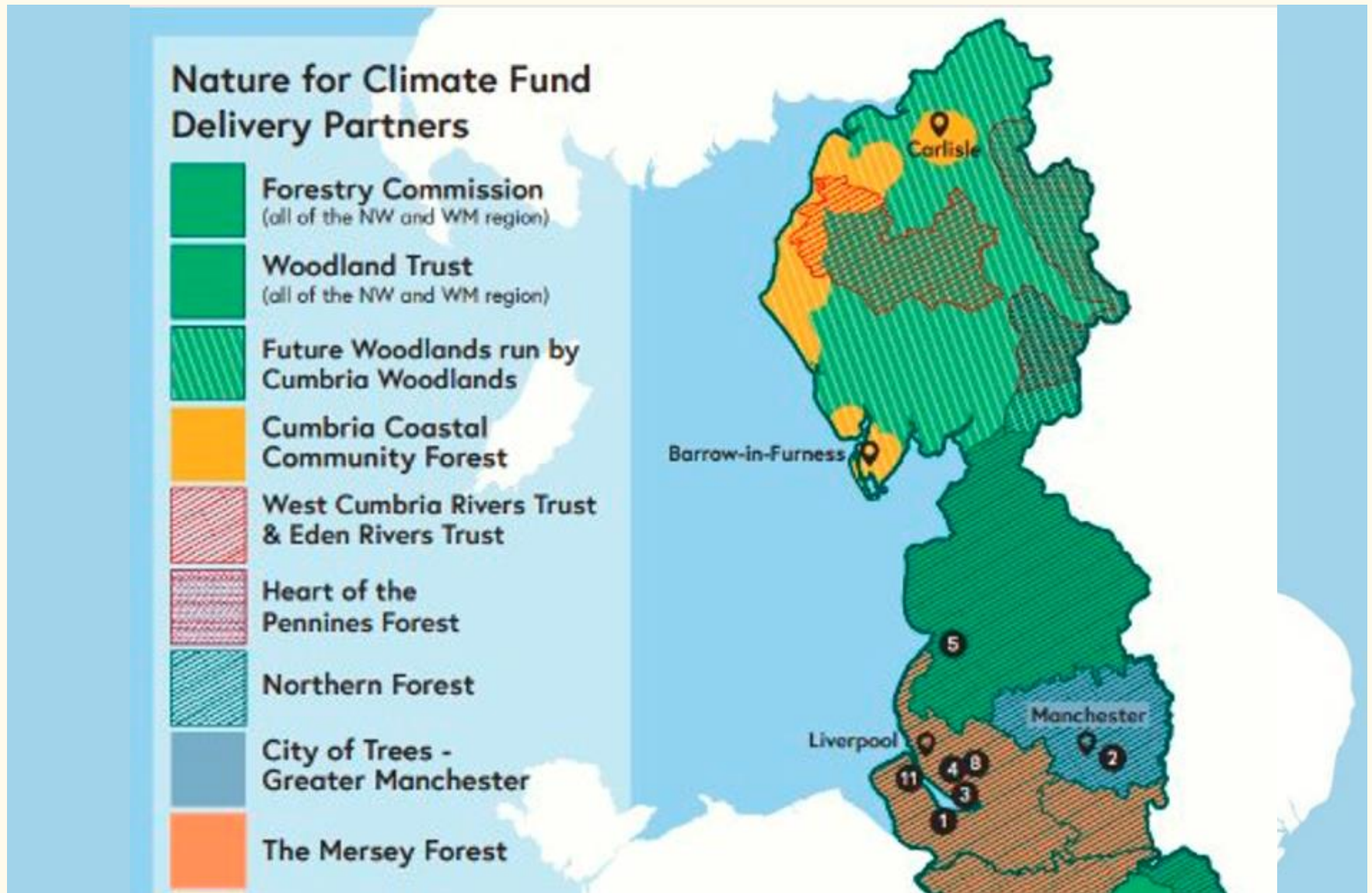


# The **England Woodland Creation Offer** (EWCO)

Colin Binnie  
Forestry Commission



# NWWM Woodland Creation Partners

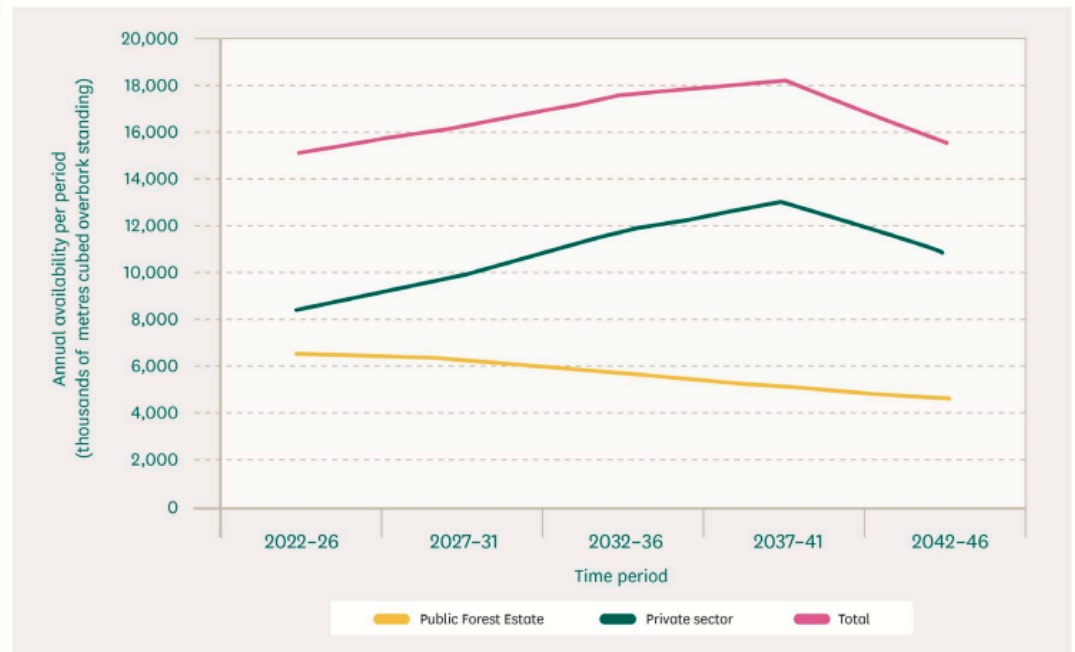


# But first.... Why Woodland?

Timber price is supply/demand driven

- The World Bank estimates that global timber demand is set to quadruple by 2050.
- With increasing timber technology - UK timber can be competitive with slower grown European timber
- September 2023 ave. standing sale price (obs) >£30/m<sup>3</sup> (~ £20k / ha).... 2050?

Figure 7: 25-year forecast of softwood timber availability for the public forest estate and private sector estate in the UK, 2022–2046

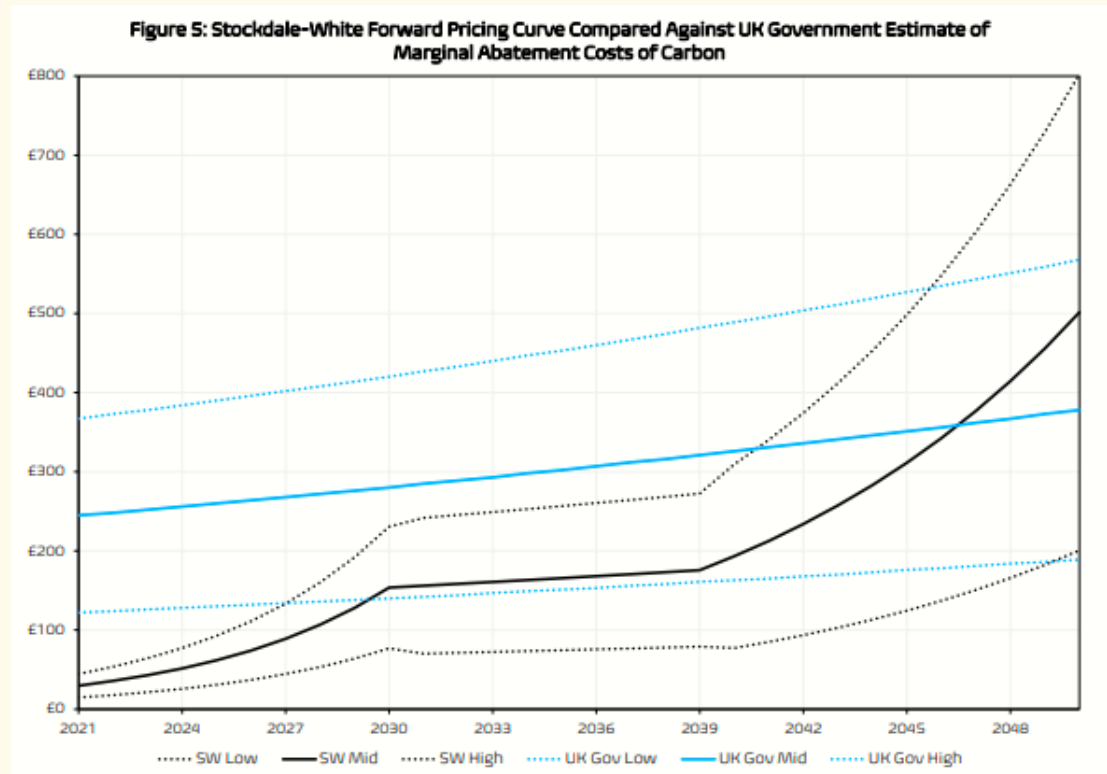
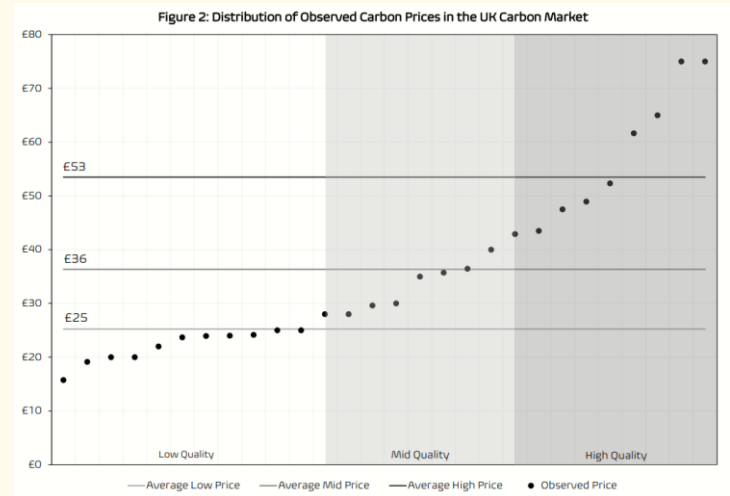


Source: Forest Research, [25-year forecast of softwood timber availability](#), 2022

# Carbon prices

All EWCO woodland can be easily registered with the Woodland Carbon Code

Carbon market developing - current price £25/t (~£7500/ha), but by 2050.....?



# England Woodland Creation Offer

Covers capital costs for establishing new woodland, maintains young trees with annual payments, and supports costs for installing infrastructure

- Available to farmers and land managers (England)
- Supports the creation of a range of woodland types that meet UKFS
- Applications can be from as little as 1 ha (0.1ha minimum block size)
- Capital costs of tree planting, up to £10,200/ha
- Annual maintenance payments of £350/ha for 15 years
- Additional contributions, up to £8,000/ha
- Actual cost of infrastructure (recreation and access)
- Can utilise Natural Colonisation – not just planting

CATEGORY	STANDARD COST ITEM	Price	Unit
PLANTING	Supply and plant tree	£1.72	/tree
	Supplement for use of individual tree shelter	£2.43	/each
	Supplement for use of individual tree wrap	£1.23	/each
	Ground preparation (scarification for natural colonisation)	£121.85	/ha
	Mulch mats	£1.79	/each
BOUNDARY MANAGEMENT	Stone wall top wiring	£5.54	/m
	Dry stone wall repair	£31.91	/m
	Post and wire fencing	£7.92	/m
	Sheep netting	£9.34	/m
	Deer fencing	£10.27	/m
	Rabbit netting supplement	£5.65	/m
	Temporary electric fencing	£6.38	/m
	Difficult site fencing supplement (eligible for stock and deer)	£3.98	/m
	Strike markers	£0.93	/m
	Badger gate	£61.81	/gate
	Badger tube	£58.49	/tube



# Top EWCO messages

1. Defined standard costs items
2. Clear Additional Contributions for targeted public goods
3. Land App EWCO tool
4. Possible transfer land in live CS agreements to EWOC, without reclaim
5. Easy to register with WCC

# EWCO Additional Contributions

Spatial – [Forestry Commission Map Browser \(forestergis.com\)](https://forestergis.com)

£2,800/ha



£1,100/ha

**Nature Recovery**

Available where woodland creation will expand areas of existing native woodland, create areas of new native woodland, or expand habitat...

£400/ha



**Water Quality**

Available where woodland creation will help reduce pollutants through land use change that reduces fertilizer application or by creating...

£500/ha



**Flood Risk Management**

Available where woodland creation can help reduce the risk of flooding.

£1600/ha



**Riparian Buffers**

Available where the creation of native broadleaved woodland along watercourses will improve river habitats.

£500/ha



**Close to Settlements**

Available where woodland creation will provide social and environmental benefits by being close to people.

£2,200/ha



**Recreational Access**

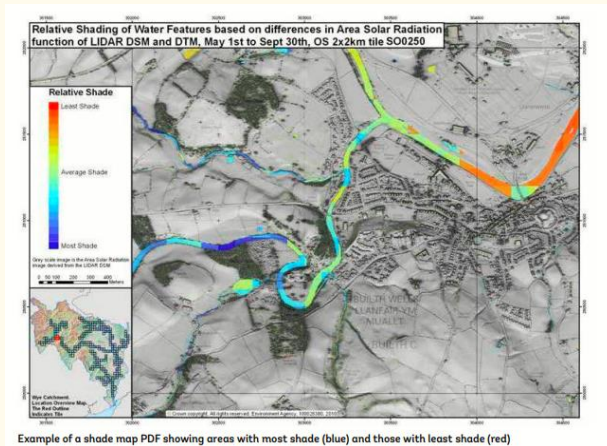
Will provide new long-term permissive access for recreation.





# EWCO Additional Contributions

## Riparian Buffers - [Forestry Commission Map Browser \(forestergis.com\)](http://forestergis.com)



Available where native woodland creation will provide dappled shade that will improve aquatic ecology by reducing summer water temperatures

- £1,600/ha, minimum of 10m wide
- Awarded on the following basis:
  - **Spatial targeting:** planted within 10m of the watercourse and within the 'EWCO - Keeping Rivers Cool' layer.
  - **Species mix:** Native species. 30% can be woody shrubs.
  - **Stocking density:** 1,100 stems/ha and 40% open space.
  - **Ground preparation:** No pre-planting drainage or land preparation work.





# EWCO Additional Contributions

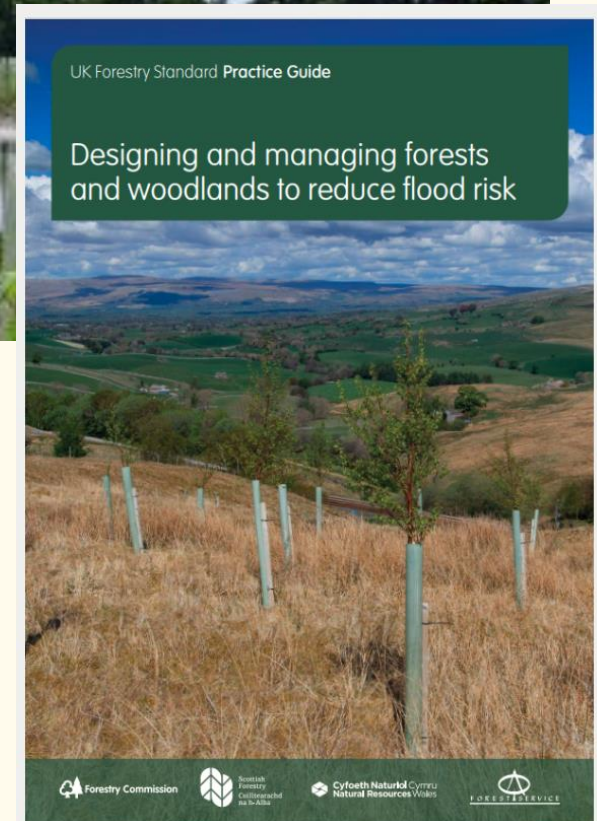
## Flood Risk Management

Where woodland, in the appropriate location and of the appropriate design can help reduce the risk of flooding.



- £500/ha
- Awarded on the following basis:

- **Spatial targeting:** Flood Risk Management layer
- **Species mix:** Native species. 30% can be woody shrubs, broadleaves along watercourses.
- **Stocking density:** 1,100 stems/ha and 40% open space.
- **Ground preparation:** No pre-planting drainage or land preparation work.



# EWCO Additional Contributions

## Water Quality

Available in catchments with a moderate to poor water quality.

Where woodland can improve water quality through landuse change or intercepting pollution and sediment



- £400/ha
- Awarded on the following basis:
  - **Spatial targeting:** layer or CSFO agreement.
  - **Species mix:** Max. 50% of single species, upto 30% woody shrubs.
  - **Stocking density:** Min. 1,100 stems/ha and Max. 20% open space.
  - **Ground preparation:** Suitable timing and slow discharging in to buffer areas not directly to watercourses.



## How EWCO stacks up

### **Private finance**

Timber, carbon, private finance for ecosystem services

### **Additional contributions**

Up to £8,000/ha when contributing to additional benefits

### **Actual cost support for activities**

Contribution towards the actual cost of infrastructure

### **Annual maintenance payments**

£350/ha per year (for 15 years)

### **Basic Payment Scheme compatibility**

Continue to claim BPS on eligible land planted under EWCO

### **Capital costs**

Up to £10,200/ha to support tree planting activities

# Land App partnership with FC



## Check

- Check the eligibility of your SBI number
- Identify High-Value Sites and areas for Natural Colonisation

 Land App

Free

EWCO Checker Tool



## Plan

- Build your plan from eligible areas and shape the design to meet your needs
- Plan additional capital works

 Land App

Free

Woodland Creation Template



## Validate

- Validate your plan and get updated values
- Ensure eligibility of your design

 Land App

Free

EWCO Validator - Toolbox



## Apply

- Auto-populate your EWCO Application form from your data
- Save time and get funding ready

 Land App

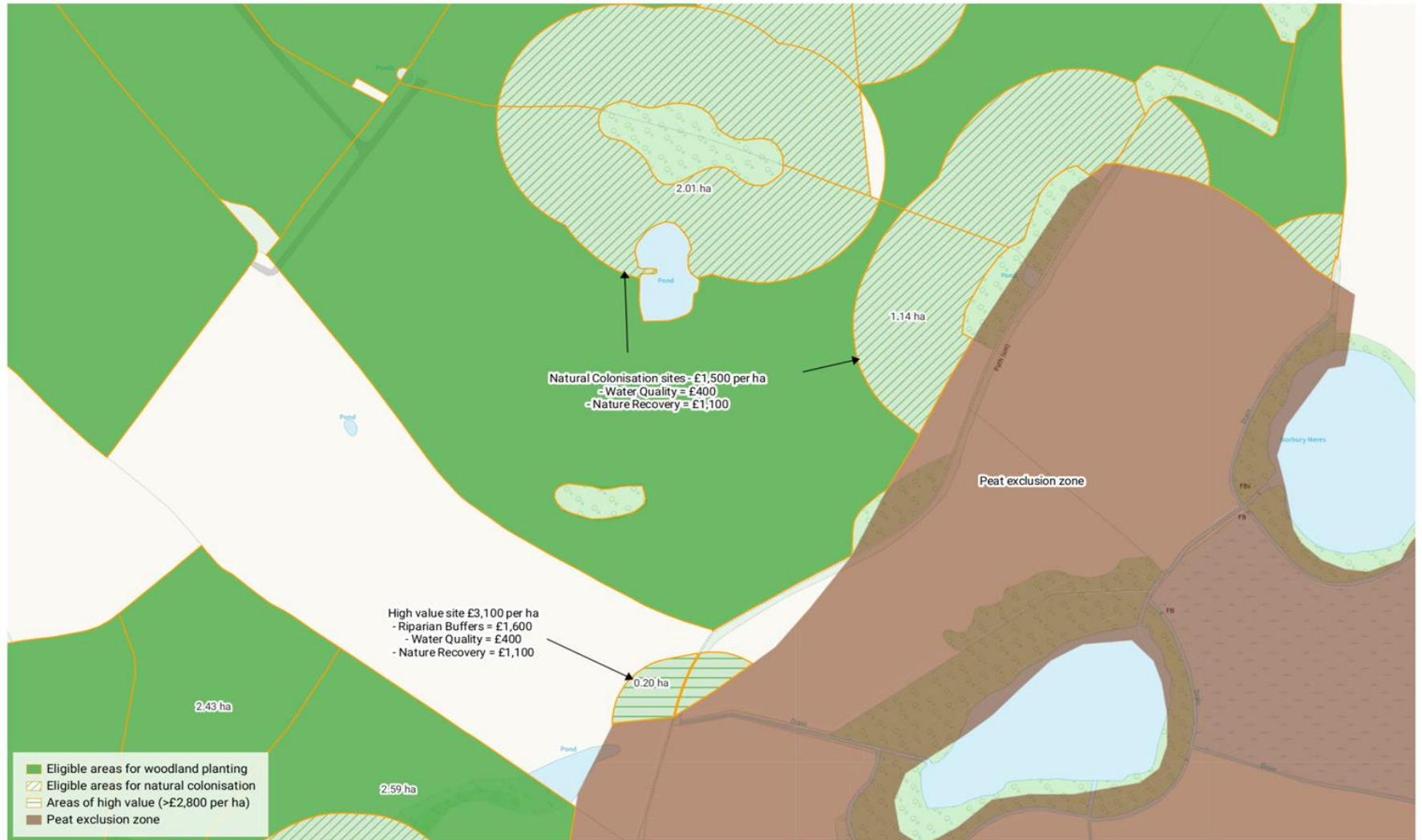
Pro

EWCO Annex Auto-populator

Coming soon!

<https://go.thelandapp.com/register>





Produced on May 12, 2023.  
 © Crown copyright and database right 2023 (licence number 100059532)

Potential sites generated by EWCO Checker Tool, via Land App.  
 Partnership with Forestry Commission

100 m  
 Scale 1:3565 (at A4)



# Constraint layer

Areas NOT eligible for EWCO

---

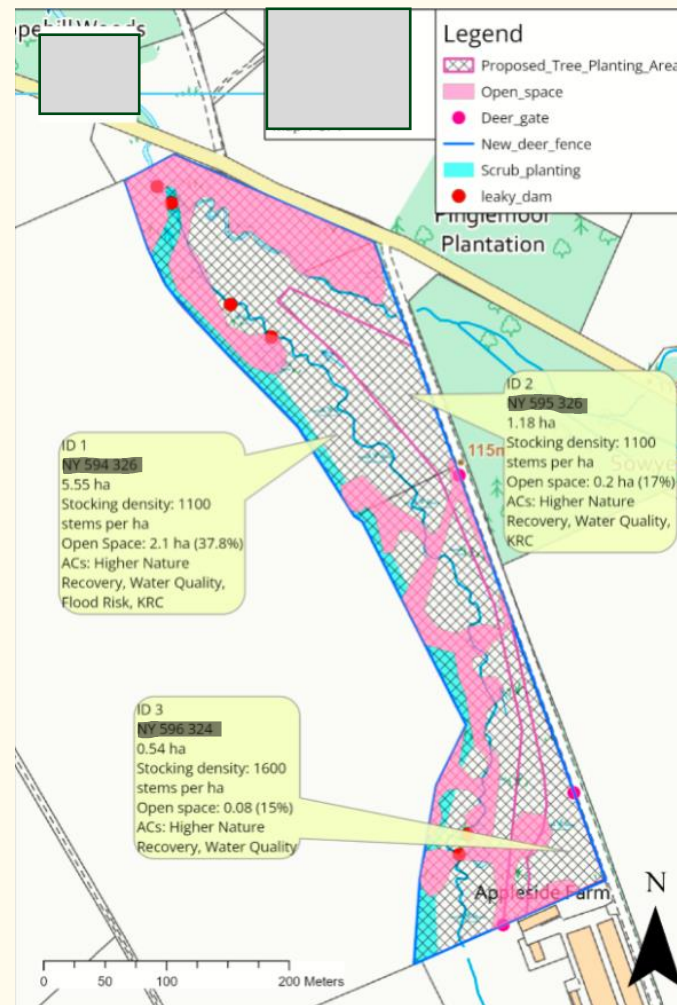
Layer name	Constraint	Source
<i>Provisional Agricultural Land Classification</i>	Grade 1 or Grade 2	<a href="#">Natural England</a>
<i>SSSI</i>	All	<a href="#">Natural England</a>
<i>Priority Habitat Inventory (England)</i>	All	<a href="#">Natural England</a>
<i>Scheduled Monuments</i>	All (plus a 20-metre buffer)	<a href="#">Historic England</a>
<i>England Peat Status GHG and C Storage</i>	All	<a href="#">Natural England</a>

See [Help Center](#) for more information



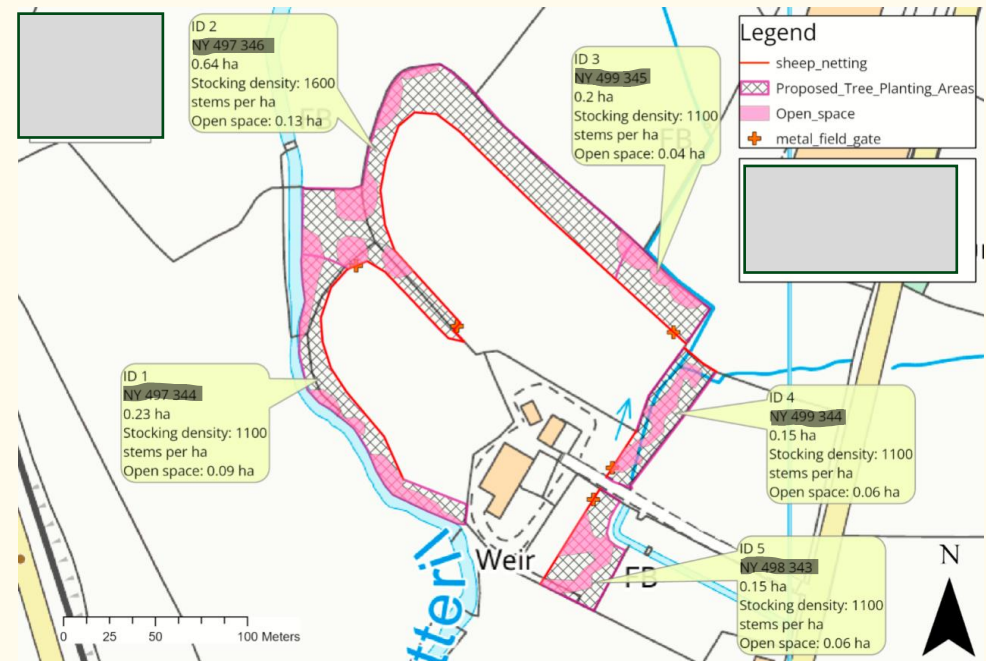
# Example A: 7.3ha riparian corridor

Item(s)	£ / item or ha	Project total
Capital items	£8,000	£65,000
High Nature Recover	£2,800	£20,440
Water Quality	£400	£2,920
Flood Risk	£500 (5.5ha)	£2,750
Riparian	£1,600 (6.7ha)	£10,720
Maintenance	£350 / yr x 15 years	£38,325
<b>Total grant</b>	<b>~19k/ha</b>	<b>~£140k</b>



# Example B: 1.29ha farm boundary

Item(s)	£ / item or ha	Project total
Capital items	£9,104	£11,744
Lower Nature Recovery	£1,100	£1,419
Water Quality	£400	£516
Riparian	£1,600 (0.65ha)	£1,040
Maintenance	£350 / yr x 15 years	£6,773
<b>Total grant</b>	<b>~18k/ha</b>	<b>~£23k</b>



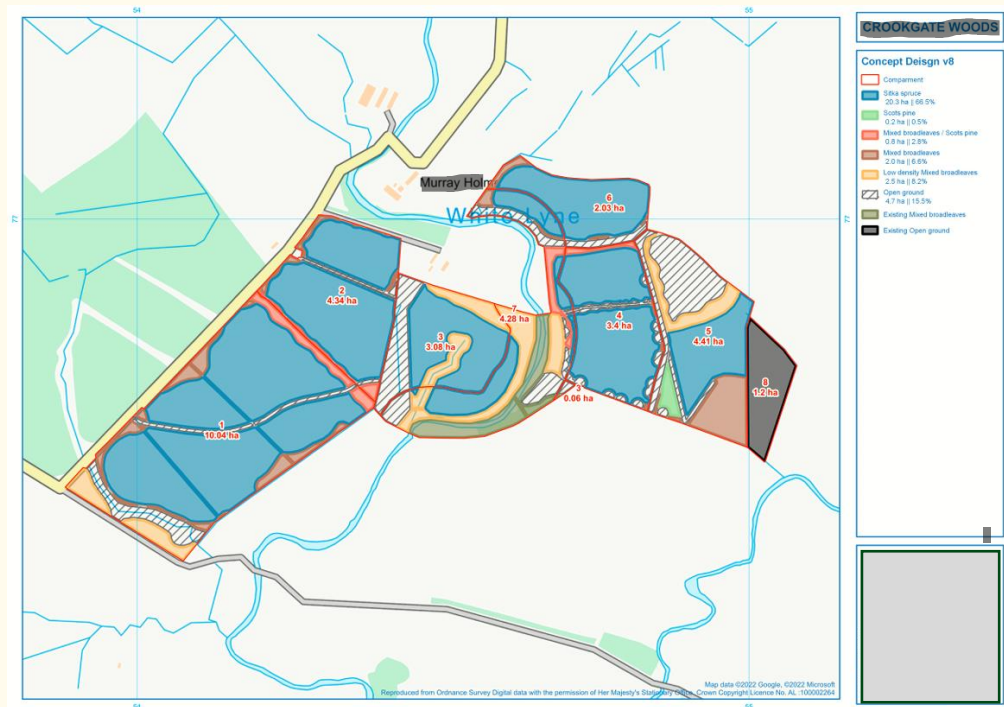
# Example C: 2.8ha with public access

Item(s)	£ / item or ha	Project total
Capital items	£10,100	£28,500
Lower Nature Recover	£1,100	£3,080
Water Quality	£400	£1,120
Close to Settlements	£500 (2.8ha)	£1,400
Public Access	£2,200 (2.2ha)	£4,840
Infrastructure	-	£2,600
Maintenance	£350 / yr x 15 years	£14,800
<b>Total grant</b>	<b>~20k/ha</b>	<b>~£56k</b>
Carbon units?	2.8ha at 300t / ha – 900t	?



# Example D: 31.7ha productive conifer

Item(s)	£ / item or ha	Project total
Capital items	£9,104	£150k
Water Quality (4.3ha)	£400	£1,700
Riparian (4.3ha)	£1,600	£6.8k
Maintenance £350 / yr x 15 years		£166k
<b>Total grant</b>	<b>~£10.2k/ha</b>	<b>~£325k</b>
Timber income?	21ha, 650m <sup>3</sup> /ha ~40yrs	£500k to £1m+?



Utilised Woodland Creation  
Planning Grant (WCPG).

# Woodland Creation Planning Grant

- Funding up to £30,000 per project
- Any type of woodland >5ha
- £1,500 to complete a stage one checklist
- At stage two:
  - £150 per hectare to produce a woodland creation design plan
  - 70% contribution towards any additional, specialist surveys that we agree need to be undertaken

Once approved applicants can apply for ANY funding to deliver the woodland creation scheme.





# Local FC Support available:

- FC Woodland Officers & Woodland Creation Officers
  - [NWWMwoodlandcreatio@forestrycommission.gov.uk](mailto:NWWMwoodlandcreatio@forestrycommission.gov.uk)
- FC 30-minute virtual surgeries
  - [https://calendly.com/fc\\_30-minute\\_surgeries/30-minute-forestry-commission-nw-surgery](https://calendly.com/fc_30-minute_surgeries/30-minute-forestry-commission-nw-surgery)
- North England Forestry Professionals group (meets quarterly)
  - [Colin.binnie@forestrycommission.gov.uk](mailto:Colin.binnie@forestrycommission.gov.uk)



- [Woodlands for Water | The Rivers Trust](#)





# EWCO & Natural Colonisation

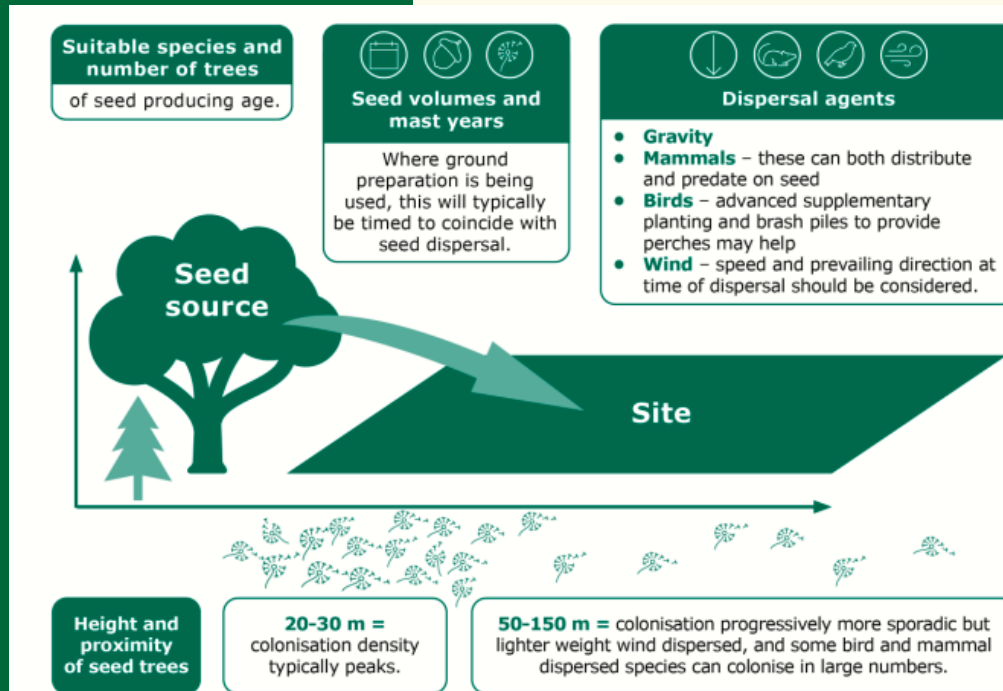


Figure 1: Factors affecting seed availability

To be within 75 meters from a viable seed source of at least 2 species

By year 10 at least 60% woody cover and 100 tree stems per hectare

Supplementary planting is NOT essential, though this can be used to supplement the NC.

If remedial/responsive planting is needed after the capital funding period, this will be at the agreement holder's expense or through any relevant support mechanism available at the time.

Additional Contributions are payable only if NC meets design objectives.

# Natural Colonisation guidance

**1.1.** It is essential to understand the objectives of a woodland when deciding on Natural colonisation. This is more suitable for delivering objectives than when competing for planting.

**1.2.** The likely timescale for establishment is an important consideration for management and prediction. Natural colonisation can be fast on suitable sites but on many sites it can take many years.

**1.3.** Combining approaches to maximise benefits and reduce risks.

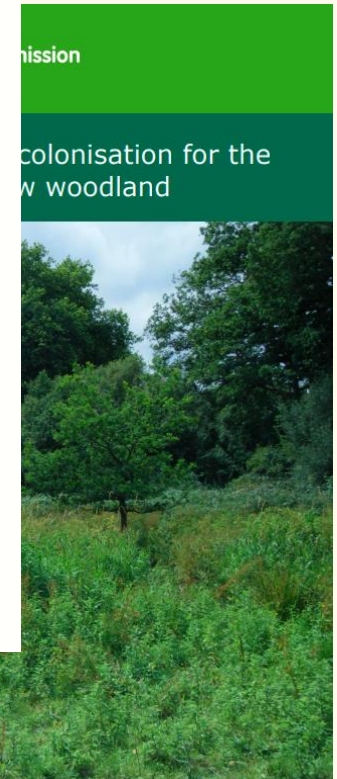
**1.4.** Creating woodland means a change of land use so legislation applies.

management interventions. Any **existing colonisation** should be protected.

will help achieve a greater density and diversity of colonisation. Sub-soiling may be necessary to break indurated layers and ensure future tree stability on compacted arable sites.

Tree species	Maximum distance for colonisation (metres)	Method of seed dispersal	Interval between good seed years	Minimum age to bear seed (years)	Potential for vegetative spread
<b>Beech</b>	20	gravity, mammal	5 to 15	50 to 60	no
<b>Sycamore</b>	50 to 100	wind	1 to 2	25-30	no
<b>Rowan</b>	uncertain	gravity, bird	1 to 2	15	occasionally
<b>Sweet chestnut</b>	20	gravity, mammal	not known	30 to 40	no
<b>Willows</b>	100 to 200	wind	1 to 2	not known	commonly
<b>Field maple</b>	50 to 100	wind	2	10	commonly
<b>Hazel</b>	20	gravity, mammal	not known	not known	commonly

The number of each box corresponds with the relevant section in this guide.



# Blending EWCO with private finance

EWCO can be combined with payments for ecosystem services:

- ✓ the conditions for those payments as well as the obligations under EWCO must be met
- ✓ option to voluntarily reduce EWCO standard cost payments to access private markets
- ✓ EWCO payments for Additional Contributions are optional; these cannot be stacked with private finance for the same service
- ✓ EWCO application form supports registration with the Woodland Carbon Code to access the Woodland Carbon Guarantee
- ✓ We are currently reviewing how EWCO can be combined with Biodiversity Net Gain

# Land in agri-environment schemes

## Environmental Stewardship (ES) and Countryside Stewardship Transfers

- Land managers can transfer land from an agreement into EWCO without the recovery of payments, subject to certain conditions
- The conditions are:
  - a) The transfer of land into EWCO will result in a **net improvement in environmental management**
  - b) The **ES/CS agreement remains viable** after transfer of the land and removal from the ES agreement