



**Bute
Energy**

www.bute.energy

Parciau Ynni Aberedw a Bryn Gilwern

Aberedw and Bryn Gilwern Energy Parks

Cylchlythyr
Tachwedd 2023

Newsletter
November 2023

Helô, Bute Energy ydyn ni

Ein nod yw gwneud i dywydd Cymru weithio i Gymru gydag ynni gwynt newydd yn cael ei harneisio yn ein parciau ynni.

**Rydym yn datblygu
cynigion ar gyfer dau barc
ynni newydd ym Mhowys:**

Parc Ynni Bryn Gilwern
i'r dwyrain o Landrindod

Parc Ynni Aberedw
i'r dwyrain o Lanfair-ym-Muallt

Mae rhagor o wybodaeth ar
gael ar ein gwefannau:
aberedwenergypark.wales
bryngilwernenergypark.wales

Hello, we're Bute Energy

Our goal is to make the Welsh weather work for Wales with new wind-power harnessed in our energy parks.

**We're developing proposals
for two new energy parks
in Powys:**

Bryn Gilwern Energy Park
located to the east of Llandrindod Wells

Aberedw Energy Park
located to the east of Builth Wells

Further information is available
on our websites:
aberedwenergypark.wales
bryngilwernenergypark.wales

Bryn Gilwern

Mae'r parc ynni yn cynnwys adeiladu a gweithredu hyd at 16 o dyrbinau gwynt gydag uchafswm uchder blaen llafn o 220m. Bydd hyn yn darparu 84 megawat (MW) o drydan adnewyddadwy glân – yr anghenion trydan blyneddol cyfatebol o tua 78,700 o gartrefi.



Aberedw

Mae'r parc ynni yn cynnwys adeiladu a gweithredu hyd at 18 o dyrbinau gwynt gydag uchafswm uchder blaen llafn o 200m. Bydd hyn yn darparu 108 megawat (MW) o drydan adnewyddadwy glân – yr anghenion trydan blyneddol cyfatebol o tua 97,000 o gartrefi.



Gweithio gyda'r gymuned

Rydym wedi ymrwmo i weithio'n agos gyda'r gymuned leol i sicrhau dealltwriaeth o'n cynigion, ac i alluogi mewnbn i'r dyluniad o gyfnod cynnar.

O ystyried pa mor agos yw'r ddau barc ynni, rydym yn cynnal y rhaglenni prosiect ar yr un pryd, gyda phroses ymgynghori ar y cyd.

Dewch i un o'n digwyddiadau i ddarganfod mwy:

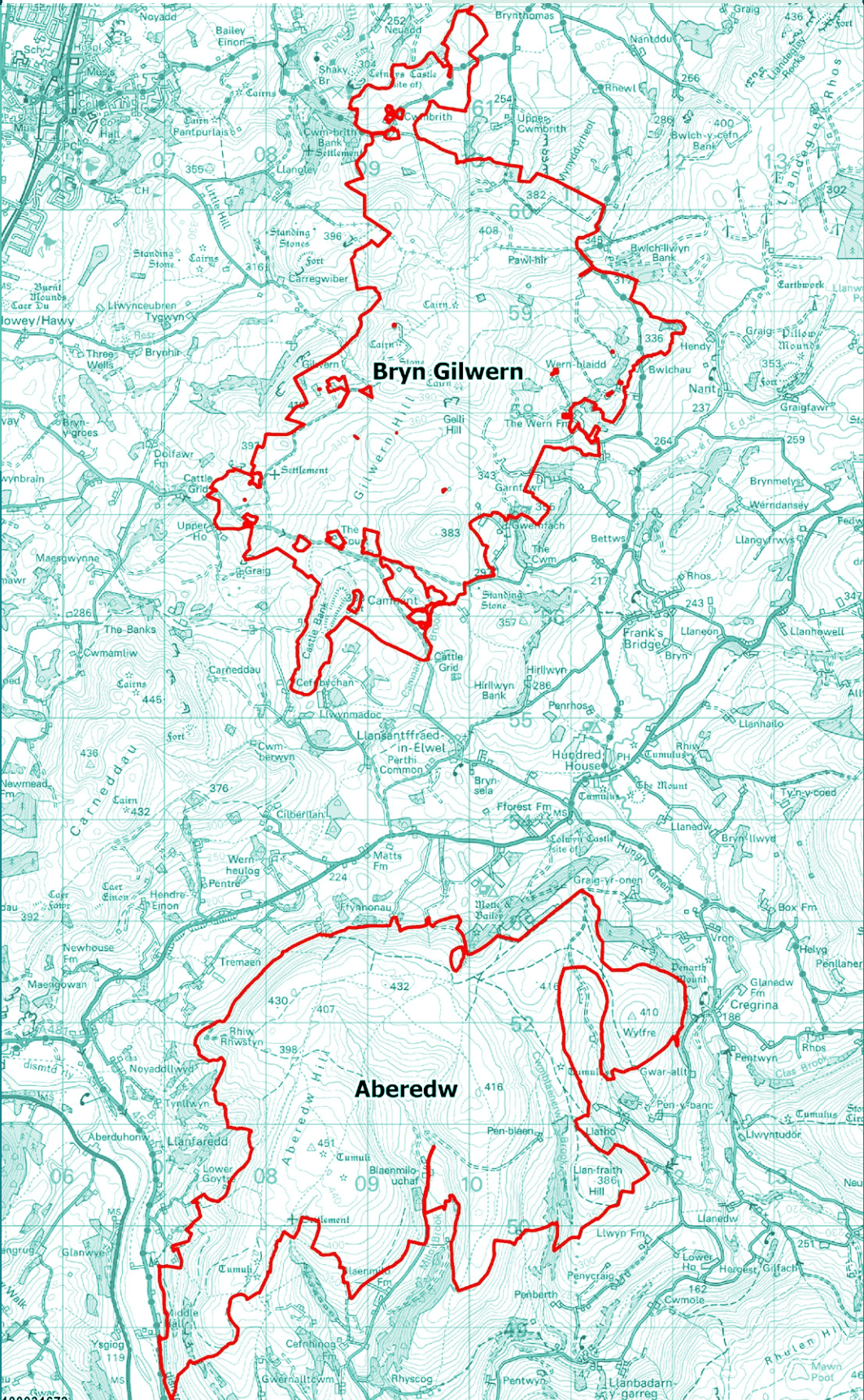
Dydd Iau 23 Tachwedd, 2.30pm - 6.30pm	Neuadd y Strand, Heol y Strand, Llanfair-ym-Muallt, LD2 3AA
Dydd Gwener 24 Tachwedd, 10.30am - 2.30pm	Canolfan Gymunedol Pen-y-bont a'r Cylch, A44, Penybont, Llandrindod, LD1 5UA
Dydd Mercher 29 Tachwedd, 12pm - 4pm	Canolfan Adnoddau Cyfryngau (MRC), Ffordd Rhydychen, Llandrindod, LD1 6AH

Cynigion

Yn Bute, rydym yn gwneud ein rhan i helpu Cymru i gyrraedd Sero Net drwy greu teulu o ffermydd gwynt, prosiectau solar ffotofoltäig a storio ynni batri, gan harneisio'r pŵer o'n cwrpas i gynyddu ynni adnewyddadwy yng Nghymru.

Proposals

At Bute, we're doing our part to help Wales get to Net Zero by creating a family of wind farms, solar PV projects and battery energy storage, harnessing the power around us to increase renewable energy in Wales.



Bryn Gilwern

The energy park includes the construction and operation of up to 16 wind turbines with a maximum blade tip height of 220m. This will provide 84 megawatts (MW) of clean renewable electricity – the equivalent annual electricity needs of approximately 78,700 homes.



Aberedw

The energy park includes the construction and operation of up to 18 wind turbines with a maximum blade tip height of 200m. This will provide 108 megawatts (MW) of clean renewable electricity – the equivalent annual electricity needs of approximately 97,000 homes.



Working with the Community

We're committed to working closely with the local community to ensure an understanding of our proposals, and to enable input into the design from an early stage.

Given the close proximity of the two energy parks we're running the project programmes concurrently, with a joint consultation process.

Come along to one of our events to find out more:

Thursday 23 November, 2.30pm - 6.30pm	The Strand Hall, Strand St, Builth Wells, LD2 3AA
Friday 24 November, 10.30am - 2.30pm	Penybont & District Community Centre, A44, Penybont, Llandrindod Wells, LD1 5UA
Wednesday 29 November, 12pm - 4pm	Media Resource Centre (MRC), Oxford Rd, Llandrindod Wells, LD1 6AH

Cronfeydd Buddion Cymunedol

Rydym wedi ymrwymo i sicrhau bod ein prosiectau yn rhoi'r budd mwyaf i'r gymuned leol. Fel rhan o'n cynlluniau, byddwn yn sefydlu Cronfa Buddion Cymunedol ar gyfer pob parc i helpu i gefnogi prosiectau lleol a'r gymuned gyfagos.

Am bob megawat o ynni a gynhyrchir, bydd £7,500 yn cael ei fuddsoddi yn y gymuned leol – sy'n cyfateb i dros £57miliwn ar draws oes 40 mlynedd y ddau brosiect.

Community Benefits Funds

We're committed to ensuring that our projects deliver maximum benefit to the local community. As part of our plans, we'll be establishing a Community Benefits Fund for each park to help support local projects and the neighbouring community.

For every megawatt of energy generated, there'll be £7,500 invested in the local community – that's in the region of £57 million across both projects' 40 year lifespans.

Adborth

Gallwch roi eich adborth drwy lenwi ffurflen ar-lein ar y wefan. Mae rhagor o wybodaeth ar gael ar ein gwefannau.

Os hoffech gopi o'r ffurflen adborth cysylltwch â ni gan ddefnyddio'r manylion cyswllt isod.

Have your say

You can give your feedback by completing an online form on the website. Further information is available on our websites.

If you would like a copy of the feedback form please get in touch using the contact details below.

Cysylltu â ni

Y dyddiad cau ar gyfer sylwadau yw: Dydd Mercher 20 Rhagfyr 2023

Get in touch

The deadline for comments is:
Wednesday 20 December 2023



bryngilwernenergypark.wales

bryngilwern@bute.energy

01597730133



aberedwenergypark.wales

aberedw@bute.energy

01597730133